

## **eHealth for Regions**

### **Maps of neighbourhood medical care/ care in the community**

#### **Health Care in Schleswig-Holstein**

Lars Heidorn, Dorothee Gruler, Klaus Westphal

### **What means regional planning, spatial structure or town and country planning in connection to health care?**

Essential purpose of regional planning is sustainable development, which integrates social and economic demand with natural and ecological functions of our landscape. That means....

1. to assure free development of personality in community and in responsibility compared to future generations
2. to provide and develop natural landscape and ecological spaces
3. to realize better economic development

## What means regional planning, spatial structure or town and country planning in connection to health care?

That means....

4. to open land use conditions in a long term
5. to strengthen the formative diversity of regions
- 6. developing equal conditions of life in all regions, in our project equal conditions of health care, Health for all**
- 7. to balance spatial and structural disparities, for example in health care,**
8. developing new transnational strategies in the Baltic Sea Region in health care sector
9. to develop and improve new IT technologies in ehealth sector
10. to create spatial conditions for coherence in EU 27

- **Maps of medical neighbourhood care by family doctors, pharmacies, hospitals and rescue stations in the districts of Segeberg, Schleswig-Flensburg and Flensburg with GIS**
- Indicators for neighbourhood care:
  - Medical care of family doctors
  - Medical care of pharmacies
  - Hospital care
  - Mobile intensive care unit, groundbased rescue stations

## Map of medical neighbourhood care by family doctors and pharmacies

Distances / Availability

**A family doctor / pharmacie is reachable within ... minutes walking / driving**

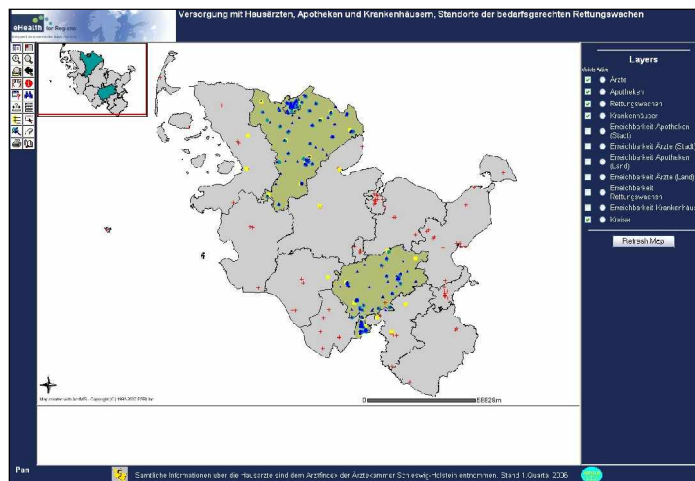
**Urban areas**

within 10 minutes walking  
= 600 m

**rural areas**

within 15 minutes driving  
= 15 km

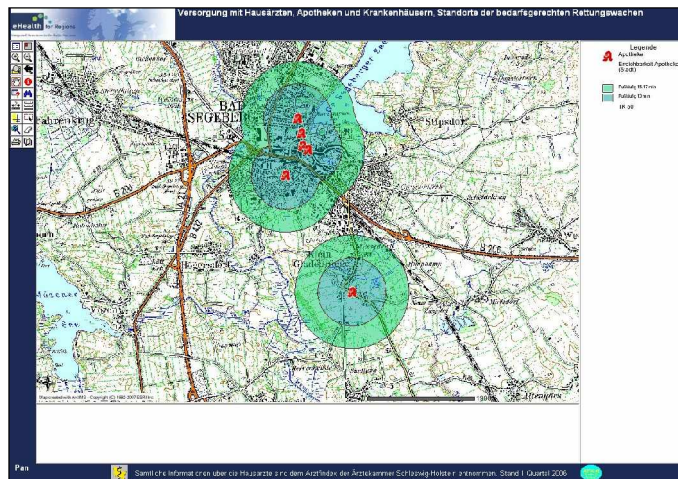
within 15 - 17 minutes walking or  
within 3 - 5 minutes driving  
= 1000 m







## Reachability Pharmacies Stadt Bad Segeberg



## Availability-Map of rescue stations

Distances / Availability

**The place of accident is reachable by NAW's / mobile Intensive Care Unit (MICU) within .... minutes**

In Germany **all places** of accidents need to be reachable **within 12 minutes!**

**Rescue helicopters** do serve a radius of 60 km, so that they are able to reach a place of accident within **15 minutes.**



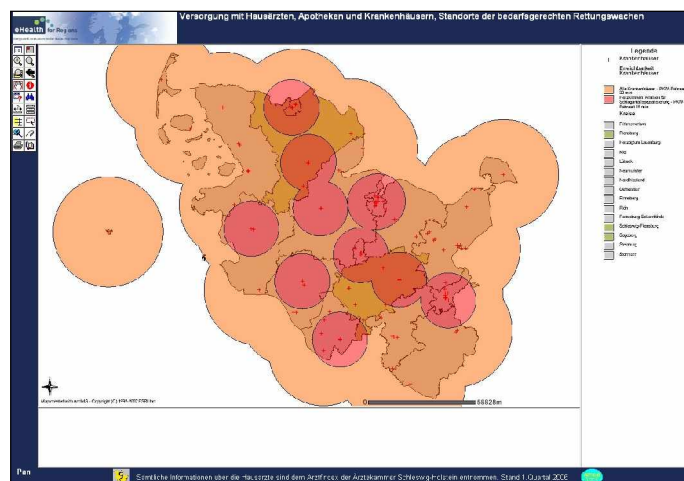
## Availability-Map of specialised hospitals for heart diseases

Distances / Availability

**A specialised hospital for heart diseases is reachable within ... minutes driving**

15 minutes	=	15 km radius
30 minutes	=	30 km radius
60 minutes	=	60 km radius

## Reachability of Hospitals



eHealth for Regions  
Integral Structures in the Baltic Sea Area

## Webverlinkung

**Dr. med. Hans...**

**Praxis**

AK Segeberger Kliniken GmbH

www.segebergerkliniken.de info@ak.segebergerkliniken.de

Krankenhausstraße 2  
23796 Bad Segeberg  
Telefon 0 4551 / 801 - 0  
Telefax 0 4551 / 801 - 1501

**Akut-Klinik: 183 Betten**      **Reha-Klinik: Keine Betten**

Krankenhausabteilungen	Rehabilitationsabteilungen
Chirurgie	
Gynäkologie/Geburtshilfe	
Herz-Nasen-Ohrenheilkunde	
Innere Medizin	
Mund-Kiefer-Gesichts-Chirurgie	
Urologie	
Intensivmedizin	

Zurück zur Karte

© KOS-IT 1999 - 2002      Feldstraße 75 - 24105 Kiel

eHealth for Regions  
Integral Structures in the Baltic Sea Area

## Future prospects

- Remodelling of the page to a physician- and pharmacie information system
  - Upgrading at specialized doctors
  - Road map / air photographs
  - Searching of sites
  - Notification of the next physician/pharmacy
  - Routing
  - Interface to navigation device

**Thank you for your attention !**